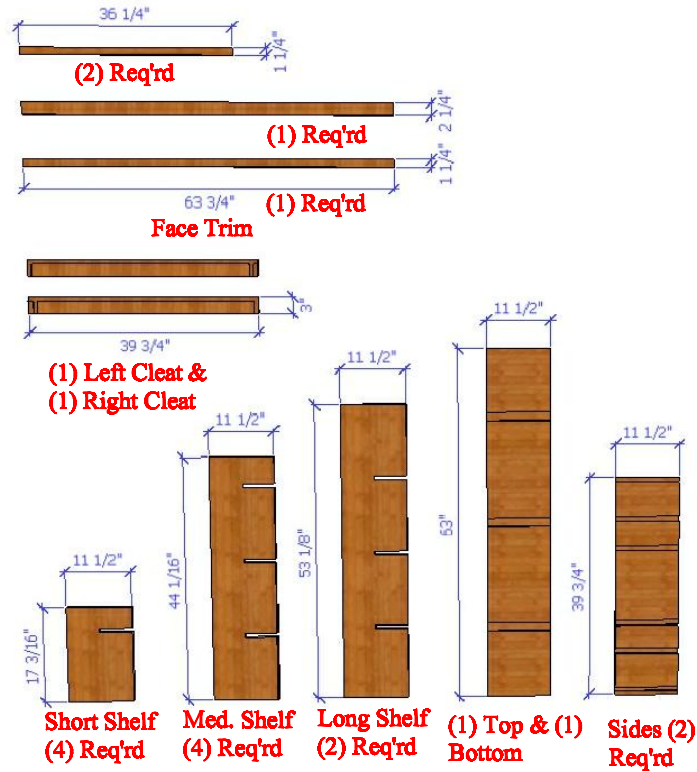
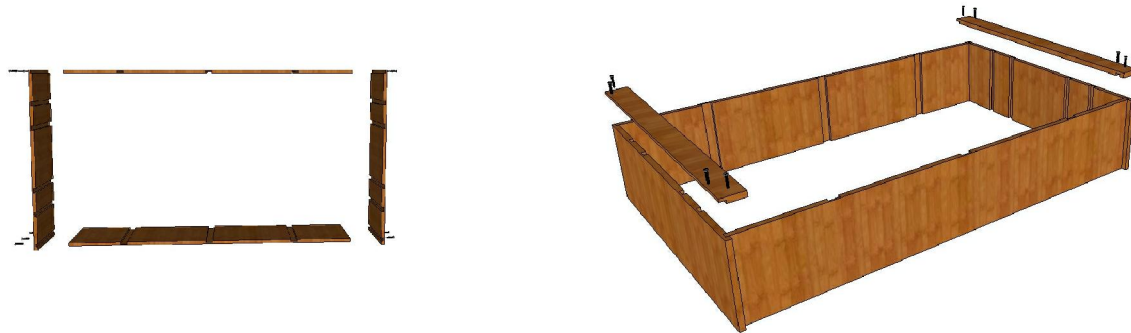


WineRacks.com
 Phone 888.687.2517
 Fax 845.658.5309

8_5-250-6375-3975 14 COLUMN COMPOUND DIAMOND BIN ASSEMBLY INSTRUCTIONS



PARTS LIST



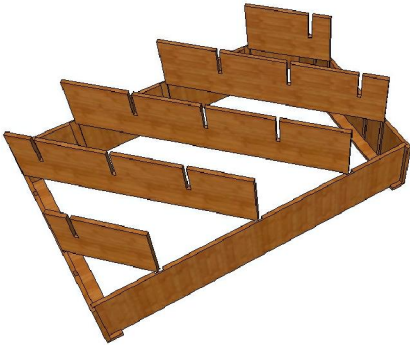
STEP 1.
 ATTACH (2) SIDES TO THE (1)TOP &
 (1)BOTTOM w/ SCREWS. ENSURE SLOTS
 ON ALL PIECES ALIGN WITH OPPOSITE
 COMPONENT.

STEP 2.
 ATTACH (1) LEFT & (1) RIGHT CLEAT w/
 SCREWS

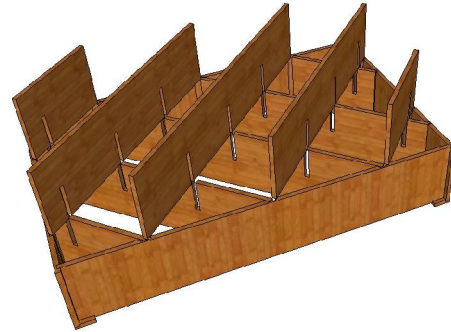
WineRacks.com
Phone 888.687.2517
Fax 845.658.5309

8_5-250-6375-3975

14 COLUMN COMPOUND DIAMOND BIN ASSEMBLY INSTRUCTIONS



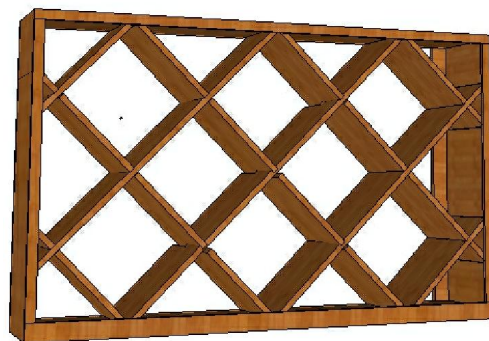
STEP 3.
FLIP BIN OVER. SLIDE (2) SHORT
SHELVES, (2) MEDIUM LENGTH SHELVES
& (1) LONG SLELF INTO SLOTS AS SHOWN.
ENSURE SHELF NOTCHES FACE UP AND
ALIGN.



STEP 4.
SLIDE (2) SHORT SHELVES, (2) MEDIUM
LENGTH SHELVES & (1) LONG SLELF INTO
SLOTS AS SHOWN. ENSURE SHELF
NOTCHES FACE DOWN AND ALIGN.



STEP 5.
ATTACH (1) 2¼" x 63¾" FACE TRIM TO
BOTTOM OF BIN, (1) 1½" X 63¾" FACE
TRIM TO TOP & (1ea.) 1¼" X 36¼" FACE
TRIM TO EACH SIDE OF BIN w/ FINISH
NAILS. STAND UPRIGHT



STEP 6.
COMPLETED BIN